

Wireless Range Extender

Mobile phone setup

1 Plug in your wifi extender

***Normal:**
Plug in, wait for 1 min, light of WiFi and Power turn green

Abnormal:
Press "reset" hole on the bottom of the product for 5s with paperclip or contact seller



2 Connect your extender SSID

Please connect to the SSID of "wifi-XXXX".

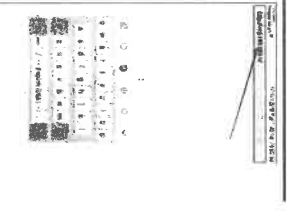
***NOTE:**
You can not Surf the Internet until you finish all the setting steps, pls continue

"XXXX" is the last 4 digits letters of MAC Address which appears at the back of each product.

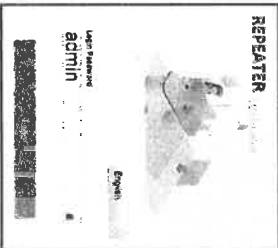


3 Sign in to management page
(Google Chrome/Mozilla Firefox recommended)

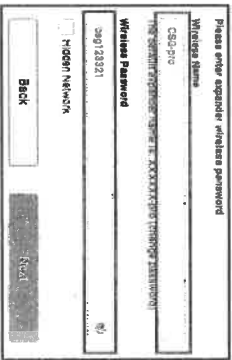
***NOTE:**
Pls make sure that you have connected the SSID(wifi-XXXX) of the wifi extender successfully, most of the PC/Smart will recognize and Sign in to the management page automatically.
If not, pls enter 192.168.168.1 on the new browser.



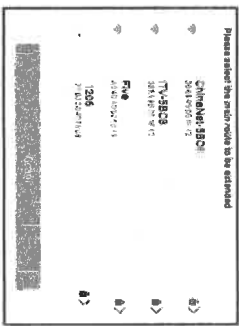
4 Enter the default password:admin



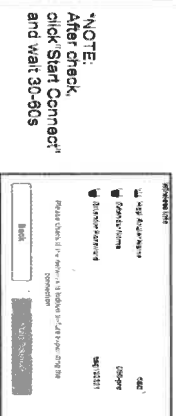
5 Set your Extender SSID and password



6 Scan and select your host router SSID



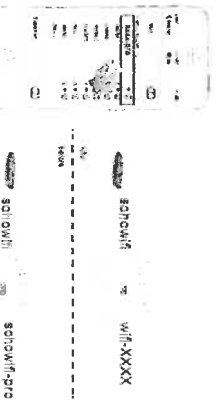
7 Check details and make a note of the Wireless info



8 When you finished setting, pls wait 30-40s until extender light is on.

The led light will light up, that means it Extender Mode successfully.

9 Reconnect your extender wifi



After the internet is completed, please always use fixed software. If it is illegal, pls ensure that the internet is successful. Please connect CS3C-3pro to the internet. Additional resources:
Please visit 3c4.com

Wireless Range Extender

PC setup step

1 Plug In your wifi extender

Normal:
Plug in, wait for trih light or "WiFi" and Power turn green

Abnormal:
Press reset hole on the bottom of the product for 8s with paperclip or contact seller



2 Connect your extender SSID

Please connect to the SSID of "wifi-XXXX".

NOTE:
You can not Surf the Internet until you finish all the setting steps, please continue

"XXXX" is the last 4 digits letters of MAC Address which appears at the back of each product.

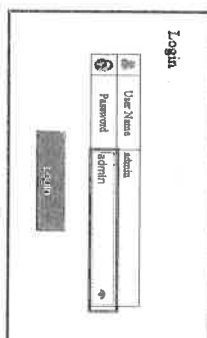


3 Sign in to management page (Google Chrome&Mozilla Firefox recommended)

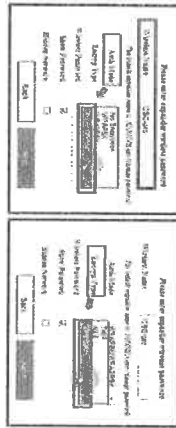
***NOTE:**
Please make sure that you have connected the SSID(wifi-XXXX) of the wifi extender successfully, most of the PC/mert will recognize and sign in to the management page automatically. If not, please enter: 192.168.1.88:1 on the new browser.



4 Enter the default password:admin



5 Set your Extender SSID and password



6 Check details and make a note of the Wireless Info

Different Channel's working together would interfere signal, and the network speed will get slow. Please change the main router channel in time.

Channel	Frequency	Power	Mode	Bandwidth	Signal	SNR	Rate	Mode
1	2.412GHz	100mW	802.11b	20MHz	-70dBm	20dB	11Mbps	11b
2	2.424GHz	100mW	802.11b	20MHz	-70dBm	20dB	11Mbps	11b
3	2.436GHz	100mW	802.11b	20MHz	-70dBm	20dB	11Mbps	11b
4	2.448GHz	100mW	802.11b	20MHz	-70dBm	20dB	11Mbps	11b
5	2.460GHz	100mW	802.11b	20MHz	-70dBm	20dB	11Mbps	11b
6	2.472GHz	100mW	802.11b	20MHz	-70dBm	20dB	11Mbps	11b
7	2.484GHz	100mW	802.11b	20MHz	-70dBm	20dB	11Mbps	11b
8	2.496GHz	100mW	802.11b	20MHz	-70dBm	20dB	11Mbps	11b
9	2.508GHz	100mW	802.11b	20MHz	-70dBm	20dB	11Mbps	11b
10	2.520GHz	100mW	802.11b	20MHz	-70dBm	20dB	11Mbps	11b
11	2.532GHz	100mW	802.11b	20MHz	-70dBm	20dB	11Mbps	11b
12	2.544GHz	100mW	802.11b	20MHz	-70dBm	20dB	11Mbps	11b
13	2.556GHz	100mW	802.11b	20MHz	-70dBm	20dB	11Mbps	11b
14	2.568GHz	100mW	802.11b	20MHz	-70dBm	20dB	11Mbps	11b
15	2.580GHz	100mW	802.11b	20MHz	-70dBm	20dB	11Mbps	11b
16	2.592GHz	100mW	802.11b	20MHz	-70dBm	20dB	11Mbps	11b
17	2.604GHz	100mW	802.11b	20MHz	-70dBm	20dB	11Mbps	11b
18	2.616GHz	100mW	802.11b	20MHz	-70dBm	20dB	11Mbps	11b
19	2.628GHz	100mW	802.11b	20MHz	-70dBm	20dB	11Mbps	11b
20	2.640GHz	100mW	802.11b	20MHz	-70dBm	20dB	11Mbps	11b
21	2.652GHz	100mW	802.11b	20MHz	-70dBm	20dB	11Mbps	11b
22	2.664GHz	100mW	802.11b	20MHz	-70dBm	20dB	11Mbps	11b
23	2.676GHz	100mW	802.11b	20MHz	-70dBm	20dB	11Mbps	11b
24	2.688GHz	100mW	802.11b	20MHz	-70dBm	20dB	11Mbps	11b
25	2.700GHz	100mW	802.11b	20MHz	-70dBm	20dB	11Mbps	11b
26	2.712GHz	100mW	802.11b	20MHz	-70dBm	20dB	11Mbps	11b
27	2.724GHz	100mW	802.11b	20MHz	-70dBm	20dB	11Mbps	11b
28	2.736GHz	100mW	802.11b	20MHz	-70dBm	20dB	11Mbps	11b
29	2.748GHz	100mW	802.11b	20MHz	-70dBm	20dB	11Mbps	11b
30	2.760GHz	100mW	802.11b	20MHz	-70dBm	20dB	11Mbps	11b
31	2.772GHz	100mW	802.11b	20MHz	-70dBm	20dB	11Mbps	11b
32	2.784GHz	100mW	802.11b	20MHz	-70dBm	20dB	11Mbps	11b
33	2.796GHz	100mW	802.11b	20MHz	-70dBm	20dB	11Mbps	11b
34	2.808GHz	100mW	802.11b	20MHz	-70dBm	20dB	11Mbps	11b
35	2.820GHz	100mW	802.11b	20MHz	-70dBm	20dB	11Mbps	11b
36	2.832GHz	100mW	802.11b	20MHz	-70dBm	20dB	11Mbps	11b
37	2.844GHz	100mW	802.11b	20MHz	-70dBm	20dB	11Mbps	11b
38	2.856GHz	100mW	802.11b	20MHz	-70dBm	20dB	11Mbps	11b
39	2.868GHz	100mW	802.11b	20MHz	-70dBm	20dB	11Mbps	11b
40	2.880GHz	100mW	802.11b	20MHz	-70dBm	20dB	11Mbps	11b
41	2.892GHz	100mW	802.11b	20MHz	-70dBm	20dB	11Mbps	11b
42	2.904GHz	100mW	802.11b	20MHz	-70dBm	20dB	11Mbps	11b
43	2.916GHz	100mW	802.11b	20MHz	-70dBm	20dB	11Mbps	11b
44	2.928GHz	100mW	802.11b	20MHz	-70dBm	20dB	11Mbps	11b
45	2.940GHz	100mW	802.11b	20MHz	-70dBm	20dB	11Mbps	11b
46	2.952GHz	100mW	802.11b	20MHz	-70dBm	20dB	11Mbps	11b
47	2.964GHz	100mW	802.11b	20MHz	-70dBm	20dB	11Mbps	11b
48	2.976GHz	100mW	802.11b	20MHz	-70dBm	20dB	11Mbps	11b
49	2.988GHz	100mW	802.11b	20MHz	-70dBm	20dB	11Mbps	11b
50	2.996GHz	100mW	802.11b	20MHz	-70dBm	20dB	11Mbps	11b

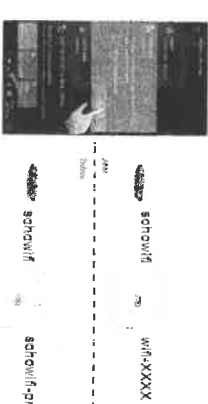
***NOTE:**
After check, click "Start Connect" and wait 30-60s



7 When you finished setting, pls wait 30-40s until extender light is on.

The led light will light up, that means it Extender Mode successfully.

8 Reconnect your extender wifi



***NOTE:**
After the setting is completed, please check the signal indicator. If the light is on, it means that the setup is successful. Please contact CSC-Experts to the nearest authorized reseller.

Please wait 34 seconds

Reconnect the extender SSID
Please wait 30-40s